

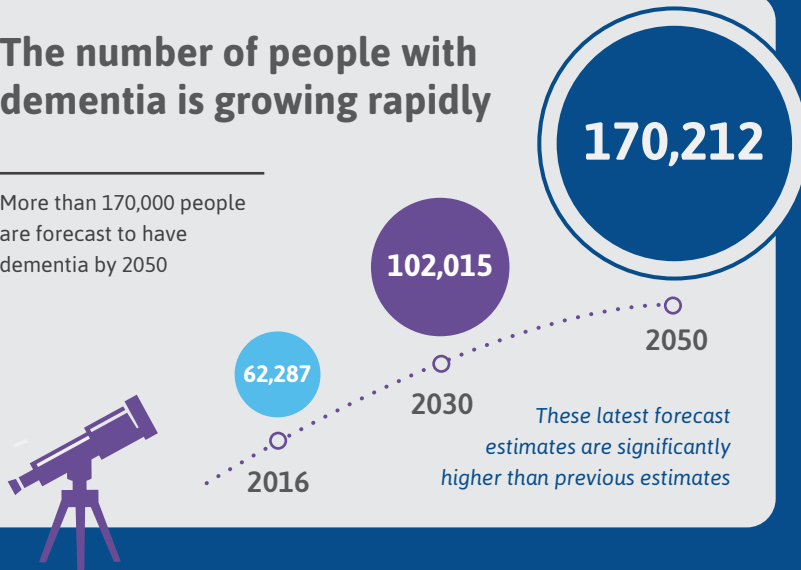
Dementia: a significant and growing health challenge



March 2017

The number of people with dementia is growing rapidly

More than 170,000 people are forecast to have dementia by 2050



Potential benefits of change



INVEST



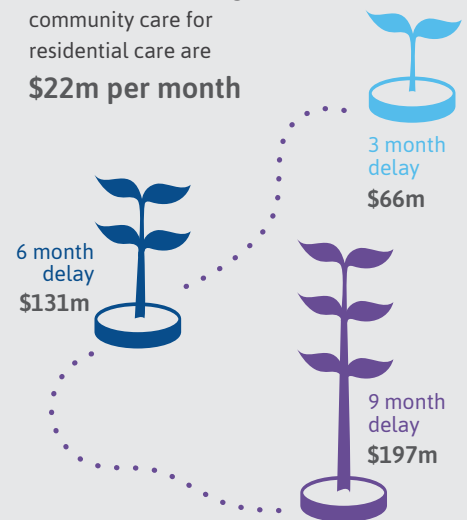
+

New models of care that might delay entry into residential care could achieve cost benefit ratios of 6.6 times



SAVE

The potential net benefits of substituting community care for residential care are \$22m per month



Dementia impacts more women than men

35,254

27,033

The number of women with dementia is around

+ 30% HIGHER

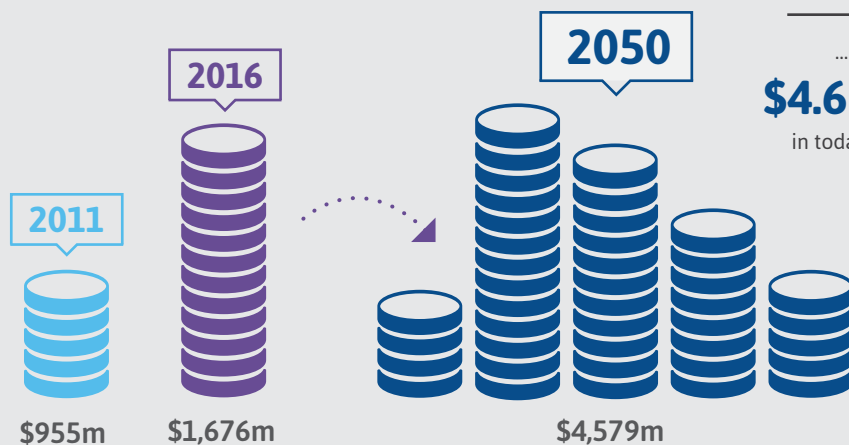
than the number of men with dementia in 2016



Economic costs have increased

75%

since 2011



... and could be over

\$4.6 BILLION

in today's dollars by 2050